



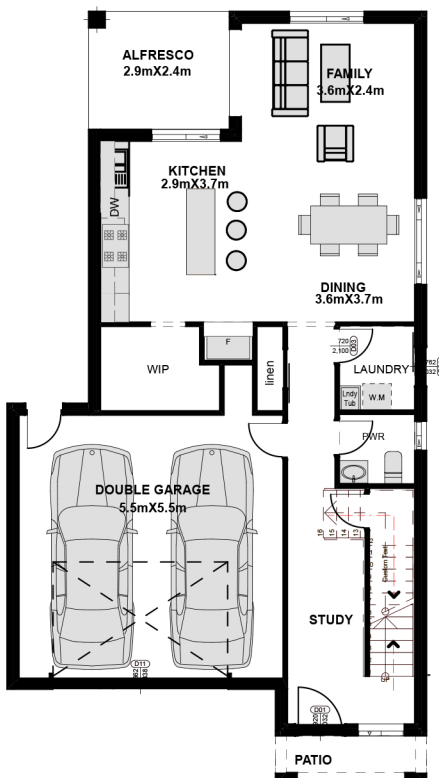
## DOUBLE STOREY STANDARD DESIGN

LUXURY | AFFORDABLE | CUSTOMISED

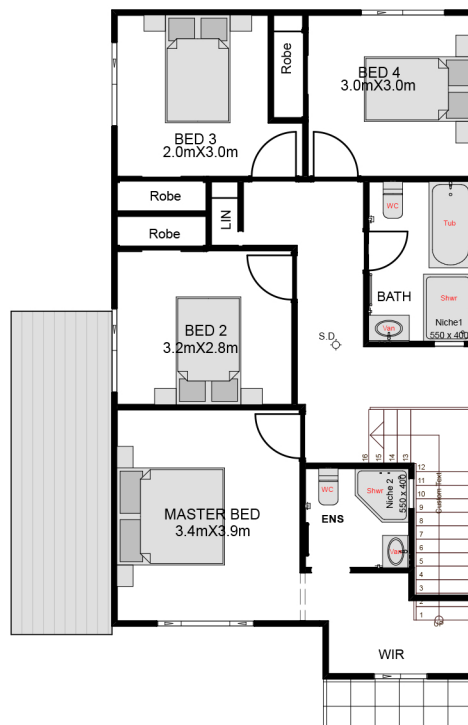
### PROJECT DETAILS

This home design is certain to cater all the family needs by careful spatial arrangement on both the floors. It is ideal for a modern family and perfectly accommodates private and common areas.

The lower floor having a study area, home theatre, family and dining spaces along with kitchen. There is an alfresco. The upper floor is accopained by a rumpus open to balcony, a master bedroom with an ensuite and walk in-robe. Also consists other bedrooms.



GROUND FLOOR PLAN



FIRST FLOOR PLAN

#### SPECIFICATIONS

##### Floor Areas (m<sup>2</sup>)

Ground Floor	74.4
First Floor	80.0
Garage	33.58
Porch	5.13
Alfresco	7.31
Total	200.42

##### Key Dimensions (m)

Minimum lot width	10
Width	8.7
Depth	19.3