



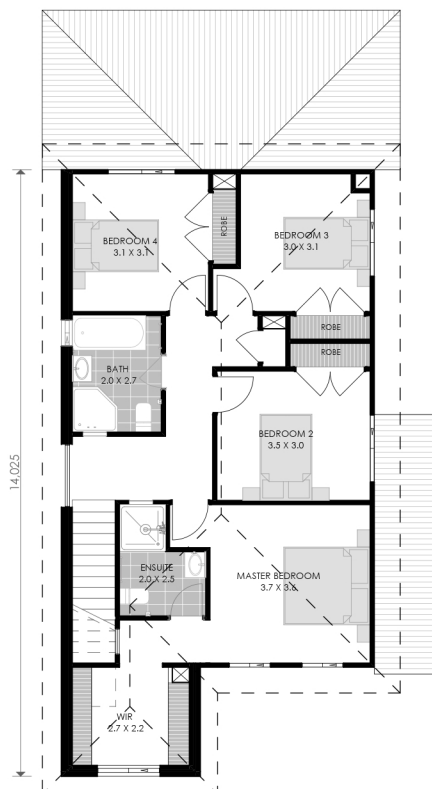
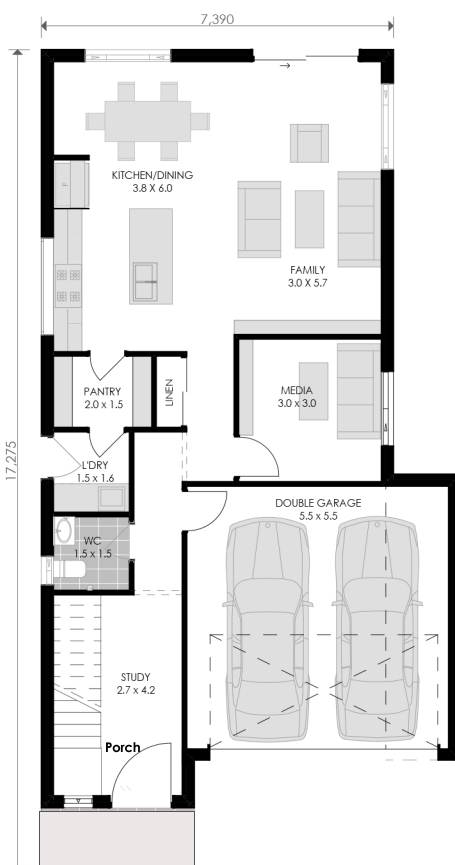
## DOUBLE STOREY STANDARD DESIGN

LUXURY | AFFORDABLE | CUSTOMISED

### PROJECT DETAILS

This home design is certain to cater all the family needs by careful spatial arrangement on both the floors. It is ideal for a modern family and perfectly accommodates private and common areas.

The lower floor having a study area, home theatre, family and dining spaces along with kitchen. There is an alfresco. The upper floor is accpanied by a rumpus open to balcony, a master bedroom with an ensuite and walk in-robe. Also consists other bedrooms.



#### SPECIFICATIONS

#### Floor Areas (m<sup>2</sup>)

Ground Floor	144.28
First Floor	114.26
Garage	30.36
Porch	4.38
Alfresco	7.95
Total	301.23

#### Key Dimensions (m)

Minimum lot width	10
Width	8.7
Depth	19.3

GROUND FLOOR PLAN

FIRST FLOOR PLAN